

## DWB Series



### Dry Wall Bead Access Doors

**Doors** are designed for flush installation in dry wall surfaces. Door features a concealed hinge that prevents distortion and closes door squarely.

**Door and Frame** are fabricated from 16 gage, galvanized steel with a prime coat finish.

**Frame** has 1/4" mounting holes positioned to allow anchoring directly to studs to assure a secure mounting. A drywall bead on the frame allows the drywall joint compound to be applied over the bead at the same time as the joints and corners.

**Flange** has prepunched holes to provide grip for the joint compound and facilitate fastening the flange to framing members with drywall screws.

**Concealed Pivoting Rod Hinge** prevents distortion and closes door squarely. Doors 24" or larger are provided with a continuous piano hinge.

**Latch** is screwdriver operated.

**Finish** is a prime coat suitable for painting.

### Guide Specification

Provide Elmdor<sup>®</sup> DWB Series, Dry Wall Bead Access Doors (specify model number and options.) Access door and frame shall be fabricated from 16 gage, galvanized steel with a prime coat finish. Frame shall have mounting holes positioned to allow anchoring directly to the studs, assuring a secure mounting. Hinge shall be concealed pivoting rod type. Latch shall be screwdriver operated. Finish shall be prime coat suitable for painting.



Member of U.S. Green  
Building Council

**DWB**

Revised: 3/24/09



**MODEL NUMBER AND OPTIONS SELECTION**

**BASE MODEL NUMBER**

DWB Dry Wall Bead Access Door

**Suffix Options**

- AKL Allen Key Latch
- CL Cylinder Lock (one per door)
- SS Stainless Steel Construction.  
(Type 304 No 4 Finish Satin Finish)

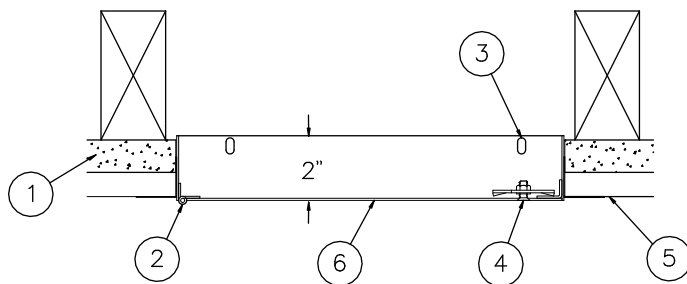
**STANDARD AVAILABLE SIZES**

Special sizes available upon request.

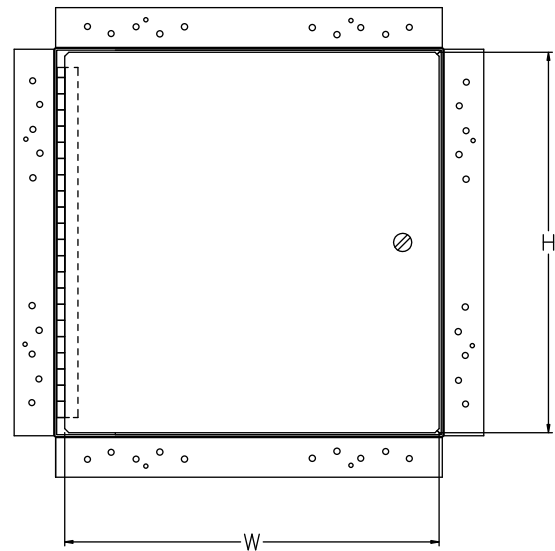
NOMINAL DOOR SIZE (W X H)	WALL OPENING (minimum required)	LATCHES	WEIGHT
DWB 8" x 8"	8-1/4" x 8-1/4"	1	3.5 lbs.
DWB 10" x 10"	10-1/4" x 10-1/4"	1	4.5 lbs.
DWB 12" x 12"	12-1/4" x 12-1/4"	1	6 lbs.
DWB 14" x 14"	14-1/4" x 14-1/4"	1	7 lbs.
DWB 16" x 16"	16-1/4" x 16-1/4"	1	8 lbs.
DWB 18" x 18"	18-1/4" x 18-1/4"	3	11 lbs.
DWB 22" x 22"	22-1/4" x 22-1/4"	3	15 lbs.
DWB 24" x 24"	24-1/4" x 24-1/4"	3	16 lbs.
DWB 24" x 36"	24-1/4" x 36-1/4"	6	25 lbs.
DWB 30" x 30"	30-1/4" x 30-1/4"	7	24 lbs.
DWB 36" x 36"	36-1/4" x 36-1/4"	8	33 lbs.

**NOTES:**

1. DRYWALL
2. CONCEALED PIVOTING ROD HINGE
3. MOUNTING HOLES
4. SCREWDRIVER OPERATED LATCH
5. DRYWALL JOINT COMPOUND
6. DOOR



**SIDE VIEW**



**FRONT VIEW**

Dimensions are subject to manufacturer's tolerance of plus or minus 1/4". Elmdor/Stoneman assumes no responsibility for use of void or suspended data. Please visit [www.elmdorstoneman.com](http://www.elmdorstoneman.com) for most current specifications. © Copyright 2009 Elmdor/Stoneman, City of Industry, CA, A Division of Acorn Engineering Company.

SELECTION SUMMARY & APPROVAL FOR MANUFACTURING	
Model Number & Options _____	Quantity _____
Company _____	Date _____
Contact _____	Title _____
Approval for Manufacturing/Signature _____	

**DWB**

Revised: 3/24/09