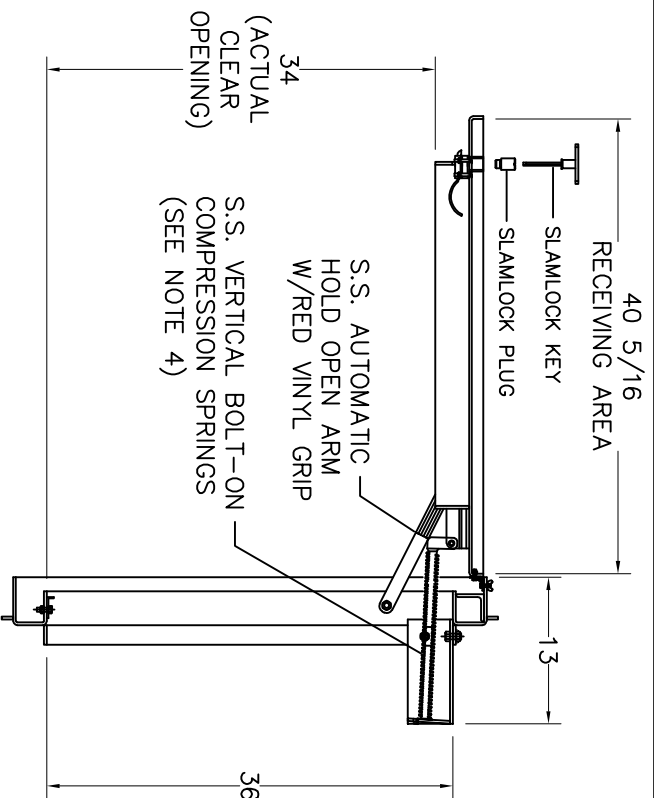


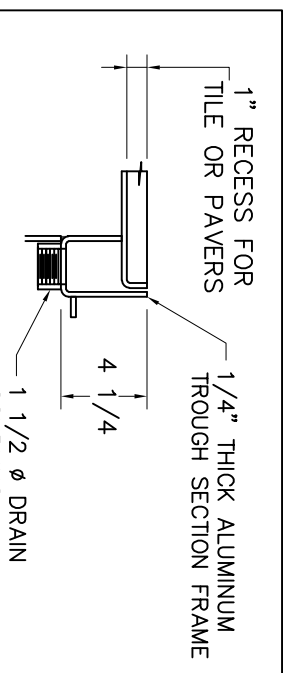
- NOTES:
- 1- MATERIAL: ALUMINIUM
 - 2- LOADING: 300 LBS. PER SQ. FT.
 - 3- 316 STAINLESS STEEL BOLTS & NUTS
 - 4- SPRING KIT SUPPLIED SEPARATELY & TO BE ASSEMBLED IN FIELD (BY OTHERS)
 - 5- AREA OF FRAME IN CONTACT WITH CONCRETE TO BE PAINTED WITH BITUMINOUS COATING.
 - 6- APPROX. HATCH WEIGHT: 143 LBS.



SPRING SUPPORT REMOVABLE
BOLTED TO FRAME WITH 1/2 ϕ S.S.
BOLTS & ALUM. NUT TACK WELDED

36 (ACTUAL CLEAR
OPENING)

1/4 PLATE SKIRT



FRAME DETAIL

THIS DOCUMENT IS THE PROPERTY OF ACUDOR PRODUCTS, INC. AND CONTAINS PROPRIETARY INFORMATION. IT SHALL NOT BE COPIED, FURNISHED NOR DISTRIBUTED (IN WHOLE OR IN PART) WITHOUT PROPER AUTHORIZATION OF ACUDOR PRODUCTS, INC.

INTERPRET DIMENSIONS AND TOLERANCES PER ASME Y14.5M
BREAK ALL SHARP CORNERS & EDGES TO 0.01
TOLERANCES UNLESS OTHERWISE SPECIFIED:
FRACTIONAL
1/16 = \pm 1/32
1/32 = \pm 1/64

COPYRIGHT © 2016
ALL RIGHTS RESERVED

ACUDOR PRODUCTS			
HATCH FT-8050 36 X 36 ALUMINIUM			
W/SPRINGS, SLAMLOCK, BIT. PAINT & 1" RECESS FOR TILE			
DRAWN BY: RT	SCALE: 1=12	SHEET: 1 OF 3	DATE: 06/17/16
APP'D BY: RT	DWG. NO: 10000004356	SHEET SIZE: B	REV: 0