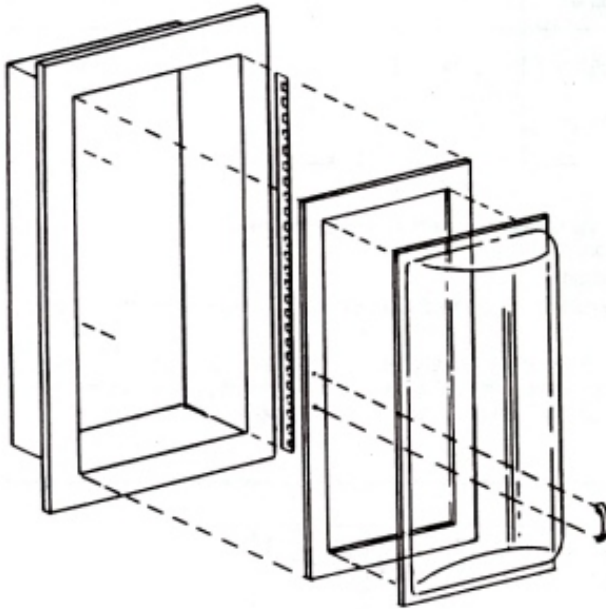


# Larsen's®

## Cameo Series Fire Extinguisher Cabinets Submittal and Detail Sheet

PROJECT: \_\_\_\_\_  
 MODEL NUMBER: \_\_\_\_\_  
 ARCHITECT: \_\_\_\_\_  
 DATE: \_\_\_\_\_

LOCATION: \_\_\_\_\_  
 QUANTITY: \_\_\_\_\_  
 CONTRACTOR: \_\_\_\_\_  
 DISTRIBUTOR: Hallmann Sales



### SPECIFICATIONS:

The Cameo's design allows for the protection of the extinguisher into its protruding bubble and not only permits installation into a shallow wall but also results in full, 180 degree visibility of the extinguisher. The manufacturer's standard bracket, which is included with each fire extinguisher, must be used to support the extinguisher inside the Cameo cabinet. The standard door and trim material is steel, and optional materials include aluminum, stainless steel, solid brass, and solid bronze. All door frames are 1/2 inch thick, hollow-metal design. All units have a satin finish pull handle with a self-adjusting roller catch and a continuous piano hinge constructed of material which matches the door and trim. The Larsen-Loc® is available with all door styles.

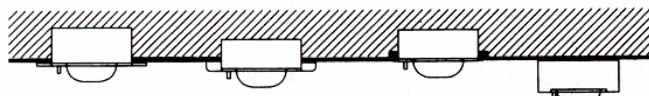
### BOX SPECIFICATION:

All recessed and semi-recessed cabinets and surface-mounted steel cabinets have a heavy gauge, white baked enamel box. Surface-mounted cabinets with aluminum door and trim have a box constructed entirely of clear or color anodized aluminum. Surface-mounted cabinets with stainless steel door and trim have a box constructed entirely of 304 stainless steel with a #4 finish.

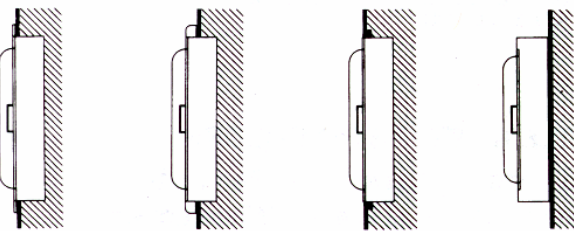
### TRIM AND DOOR SPECIFICATION:

The standard door and trim material is steel, and optional materials include aluminum, stainless steel, solid brass, and solid bronze. Steel trims and doors are one piece, constructed of heavy gauge, cold-rolled steel with a standard finish of white baked enamel, which can be used as either a finish or prime coat. Aluminum trims and doors are constructed of extruded aluminum with a satin anodized finish. Clear anodized is standard, and a wide selection of optional color anodized finishes is available. All aluminum trim and door corners are mitered. To specify aluminum trim and door, use the prefix "AL" before the cabinet model number. Stainless steel trims and doors are one piece, constructed of heavy gauge #4 finish, 304 stainless steel. Polished stainless steel finishes are available as options, if specified. To specify stainless steel trim and door, use the prefix "SS" before the cabinet model number. Solid brass and Solid bronze trims and doors are one piece, with a standard satin, brushed finish and clear protective coating. Polished brass and bronze finishes are available as options, if specified. To specify solid brass trim and door, use the prefix "B". To specify solid bronze trim and door, use the prefix "BZ".

### TOP VIEW



### SIDE VIEW



5/16", 1 1/4",  
1 1/2"

2 1/2"  
Rolled Edge

3/4" Plaster Stop  
Trimless†

Surface  
Mount

### TRIM PROJECTION:

- Flat – 5/16"
- 1 1/4" or 1 1/2" Square
- 2 1/2" Rolled Edge
- Trimless †
- Surface Mounted

### TRIM & DOOR MATERIAL:

- Steel
- Aluminum (AL)
- Stainless (SS)
- Brass (B)
- Bronze (BZ)
- Other (Specify) \_\_\_\_\_

(SEE ATTACHED SHEET FOR DIMENSIONS & DOOR STYLES)

† Trimless cabinets must be installed before the drywall because their plaster stops must be behind the drywall.  
 Trimless cabinets are not recommended for block wall installation.

LARSEN'S MANUFACTURING COMPANY - [www.larsensmfg.com](http://www.larsensmfg.com)

7421 Commerce Lane N.E., Minneapolis, MN 55432 Phone: (763) 571-1181 FAX: (763) 571-6900

FLORIDA DIVISION: 3130 N.W. 17<sup>th</sup> Street, Ft. Lauderdale, FL 33311 Phone: (954) 486-3325 FAX: (954) 486-3352

©2003 Larsen's Mfg. Co.

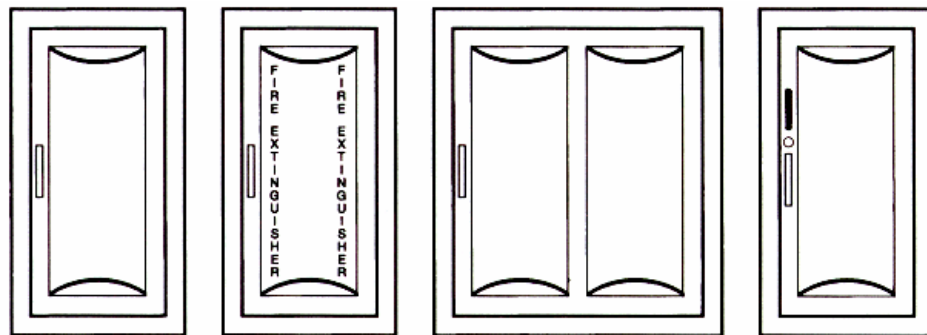
[www.Hallmann-sales.com](http://www.Hallmann-sales.com)

## CABINET DIMENSIONS - CAMEO SERIES

Model Number	Trim Style and Projection	Inside Box Dimensions			Outside Trim Dimensions**		Rough Opening***			Recommended Extinguisher Capacity
		Height	Width	Depth	Height	Width	Height	Width	Depth	
<b>NON FIRE-RATED</b> C 2409-R C 2409-5R C 2409-6R C 2409-RT C 2409-SM	Rec.-5/16" Semi-Rec. 1-½" Semi-Rec. 2-½" Trimless Surface Mounted	24" 24" 24" 24" 27½"	9½" 9½" 9½" 9½" 13"	3½" 3½" 3½" 3½" 3½"	27½" 27½" 27½" - 27½"	13" 13" 13" - 13"	25" 25" 25" * -	10½" 10½" 10½" * -	4" 2¾" 1½" 4" -	MP 2-1/2,MP5, MP5-A,DC2½, DC5,MP6,MP10, DC6,DC10, HT5,HT2½
<b>FIRE RATED***</b> FS C2409-R FS C2409-5R FS C2409-6R	Rec. 5/16" Semi-Rec. 1½" Semi-Rec. 2½"	24" 24" 24"	9½" 9½" 9½"	3½" 3½" 3½"	27½" 27½" 27½"	13" 13" 13"	26-1/8" 26-1/8" 26-1/8"	11-5/8" 11-5/8" 11-5/8"	4-5/8" 3-7/8" 2-5/8"	
<b>NON FIRE-RATED</b> C 3216-R C 3216-RL C 3216-RT C 3216-SM	Rec.-5/16" Semi-Rec. 2-½" Trimless Surface Mounted	32" 32" 32" 35½"	16" 16" 16" 19½"	3½" 3½" 3½" 3½"	35½" 35½" - 35½"	19½" 19½" - 19½"	33" 33" * -	17" 17" * -	4" 1½" 4** -	All of Above, PW2½,MP20, DC20,CD5,CD10, WC-6L, HT11,HT15½
<b>FIRE RATED***</b> FS C3216-R FS C3216-RL	Rec. 5/16" Semi-Rec. 2½"	32" 32"	16" 16"	3½" 3½"	35½" 35½"	19½" 19½"	34-1/8" 34-1/8"	18-1/8" 18-1/8"	4-5/8" 2-5/8"	
<b>NON FIRE-RATED</b> C 3228-R C 3228-RT C 3228-SM	Rec.-5/16" Trimless Surface Mounted	32" 32" 35½"	28¾" 28¾" 31½"	3½" 3½" 3½"	35½" - 35½"	31½" - 31½"	33" * -	29¾" * -	4" 4" -	Two Each of the Listed: PW2-1/2, MP10,DC10, CD5,CD10,WC-6L
<b>FIRE RATED***</b> FS C3228-R	Rec. 5/16"	32"	28¾"	3½"	35½"	31½"	34-1/8"	31"	4-5/8"	

- \* Trimless cabinets must be installed before the drywall because their plaster stops must be behind the drywall.  
Trimless cabinets are not recommended for block wall installation.
- \*\* Deduct 3/4" from HxW dimensions for cabinets with aluminum trim. This does not apply to the "FS" fire-rated option.
- \*\*\* **Rough openings are larger for fire-rated cabinets.**

NOTE: All recessed (R-5/16") and trimless (RT) Cameo cabinets listed above comply with all ADA wall projection guidelines. Semi-recessed and surface-mounted Cameo cabinets' compliance with ADA wall projection guidelines depends on several location and installation issues. Please refer to [www.larsensmfg.com](http://www.larsensmfg.com).



**CLEAR –  
NO LETTERS**

**VERTICAL  
LETTERS**

**DOUBLE BUBBLE  
(C-3127 & C-3228)**

**LARSEN-LOC™**

### BUBBLE DESIGN

- Clear - No Letters
  - Bronze - No Letters
  - Red - No Letters
  - Larsen-Loc®
- (Available with all door styles)

### BUBBLE & LETTERING COLORS

- Clear - Red Letters
- Clear - White Letters
- Clear - Black Letters
- White - Black Letters
- Other \_\_\_\_\_
- White - Red Letters
- Black - White Letters
- Red - White Letters
- Bronze - White Letters

### LARSEN'S MANUFACTURING COMPANY - [www.larsensmfg.com](http://www.larsensmfg.com)

7421 Commerce Lane N.E., Mpls, MN 55432 Phone: (763) 571-1181 FAX: (763) 571-6900

### FLORIDA DIVISION:

3130 N.W. 17<sup>th</sup> Street, Ft. Lauderdale, FL 33311 Phone: (954) 486-3325 FAX: (954) 486-3352

©2003 Larsen's Mfg. Co.