

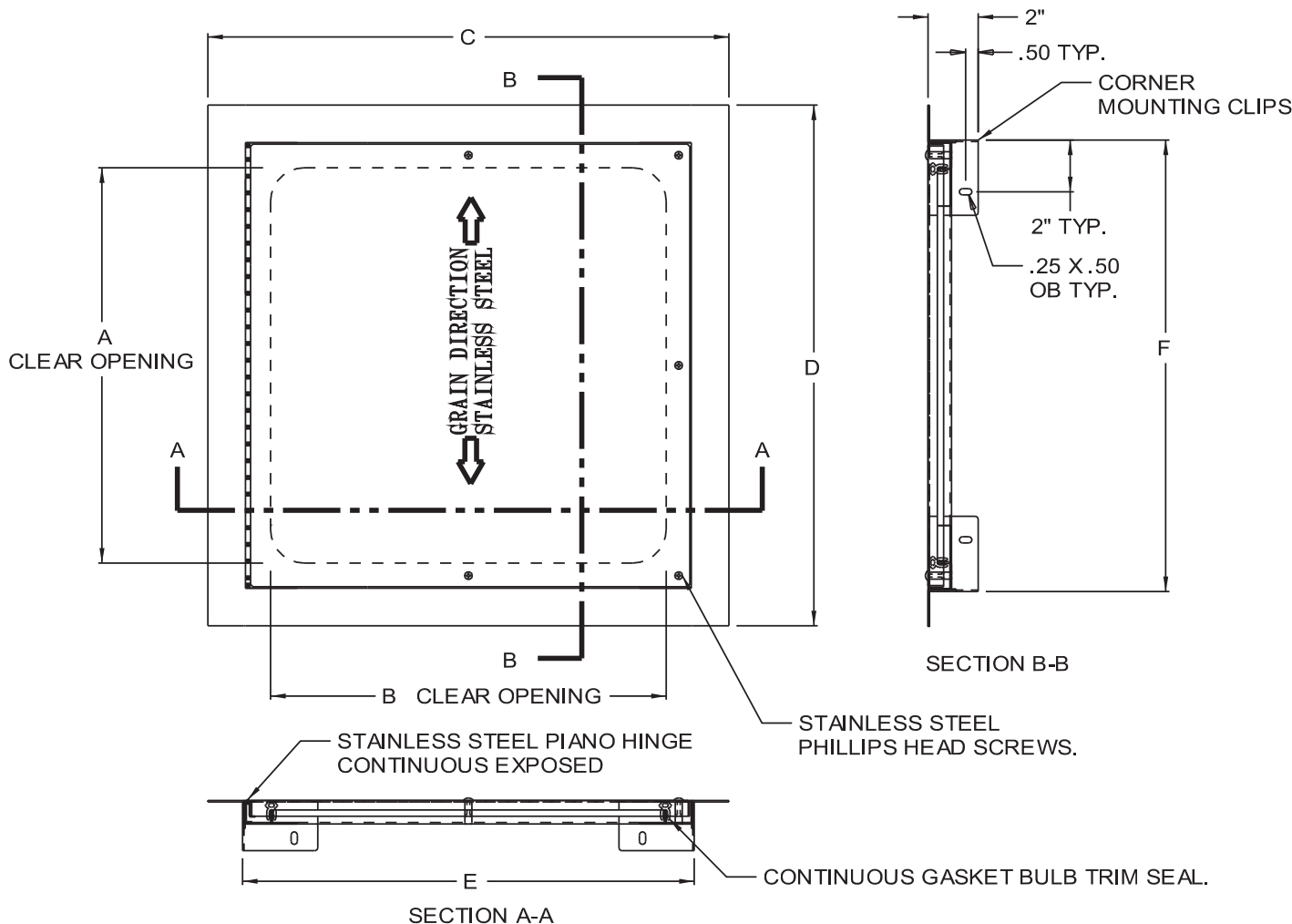


www.acudor.com
U.S.A.: info@acudor.com / 800.722.0501
CANADA: info@acudor.ca / 844.228.3671
INTERNATIONAL: info@acudorintl.com
(905) 428.2240

ADWT

AIRTIGHT / WATERTIGHT

QTY.	NOMINAL SIZE	A	B	C	D	E	F	SCREWS
	12 x 12 (305 x 305)	9.65 (245)	9.65 (245)	14.75 (375)	14.75 (375)	12.00 (305)	12.00 (305)	2
	14 x 14 (355 x 355)	11.65 (296)	11.65 (296)	16.75 (425)	16.75 (425)	14.00 (355)	14.00 (355)	2
	18 x 18 (457 x 457)	15.65 (397)	15.65 (397)	20.75 (527)	20.75 (527)	18.00 (457)	18.00 (457)	2
	24 x 24 (610 x 610)	21.65 (550)	21.65 (550)	26.75 (679)	26.75 (679)	24.00 (610)	24.00 (610)	2
	24 x 36 (610 x 914)	33.65 (855)	21.65 (550)	26.75 (679)	38.75 (984)	24.00 (610)	36.00 (914)	3
	30 x 30 (762 x 762)	27.65 (702)	27.65 (702)	32.75 (832)	32.75 (832)	30.00 (762)	30.00 (762)	5
	30 x 48 (762 x 1219)	45.65 (1159)	27.65 (702)	32.75 (832)	50.75 (1289)	30.00 (762)	48.00 (1219)	5



THIS DOOR HAS BEEN TESTED AS FOLLOWS:
AIR INFILTRATION : LESS THAN 0.01 CFM/SQ FOOT: ASTM E 283
WATER RESISTANCE: NO LEAKAGE AT 15.05 PSF: ASTM E 331

STANDARD FEATURES:
FRAME FULLY WELDED TO PREVENT LEAKAGE.
CONTINUOUS GASKET BULB TRIM SEAL.
STAINLESS STEEL PHILLIPS HEAD SCREWS

OPTIONS:

LOCK
☐ CYLINDER LOCK AND KEY

SCREW TYPE
☐ ALLEN HEAD SCREW
☐ SPANNER HEAD SCREW
☐ OTHER

MATERIAL
☐ STAINLESS STEEL
☐ OTHER

FINISH
☐ MILD STEEL
☐ OTHER

JOB NAME:

APPROVED BY:

CUSTOMER:

DATE: