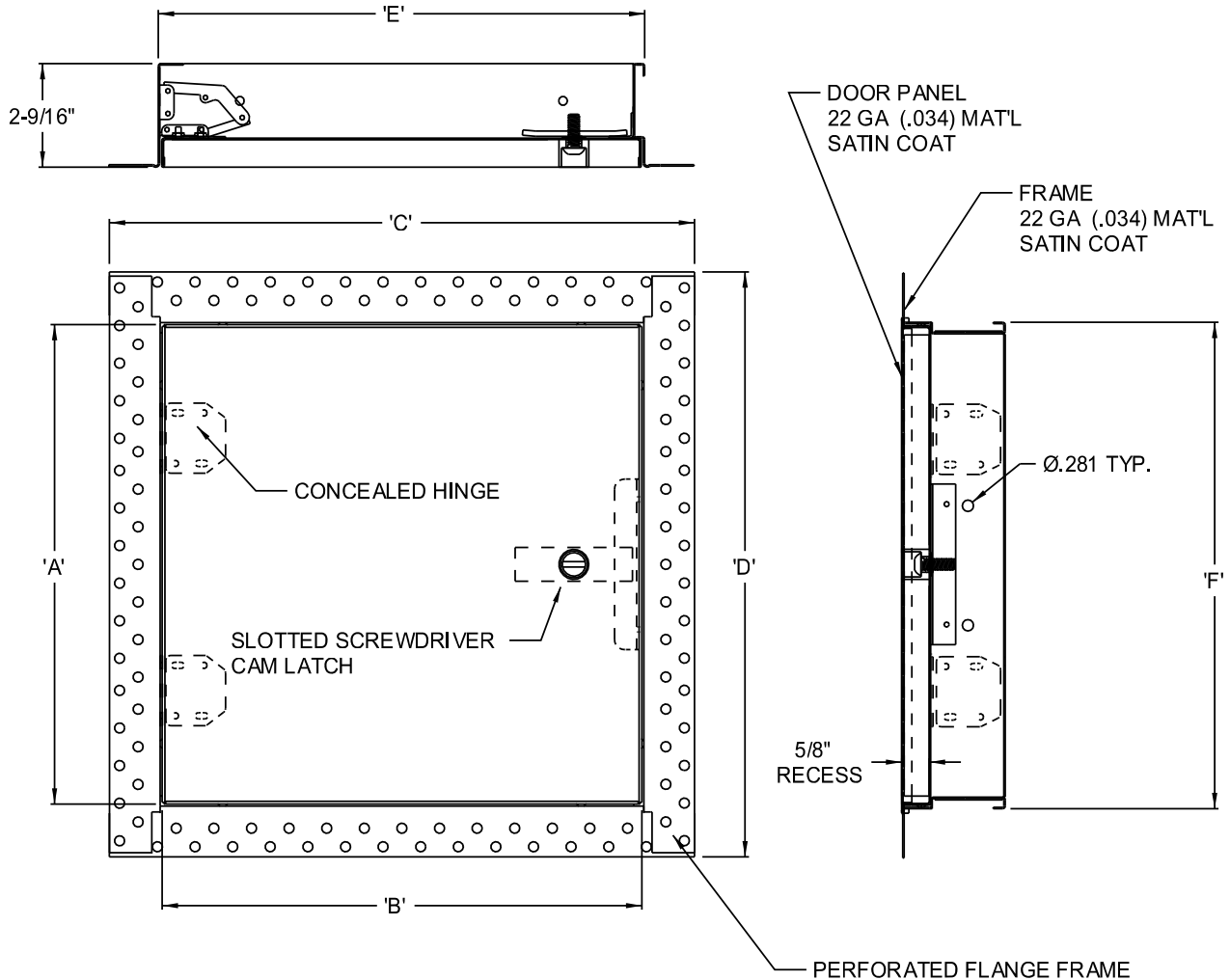


DW-5015

INSTALLATION INSTRUCTIONS



1. Slide the RETURN FLANGE of access doors into opening.
2. Open panel to access .25" x .50" mounting holes in RETURN FLANGE.
3. Screw through these holes into joist system or whatever frame is available. Where a frame is unavailable on at least (2) two opposite sides of the access panel, unit will need to be "framed out."
4. After screws are in place, close unit and secure all screwdriver operated cams shut.
5. Tape and spackle over the perforated flange frame to conceal.
6. Paint the unit if necessary.



Corporate Offices:
80 Little Falls Road, Fairfield, NJ 07004
Tel: (973) 575-5120 • Fax: (973) 575-5160
Email: info@acudor.com

Western Region:
4216 North Pecos Rd., Suite 104, Las Vegas, Nevada 89115
Tel: (702) 644-8710 • Fax: (702) 644-8720
Email: LVsales@acudor.com