

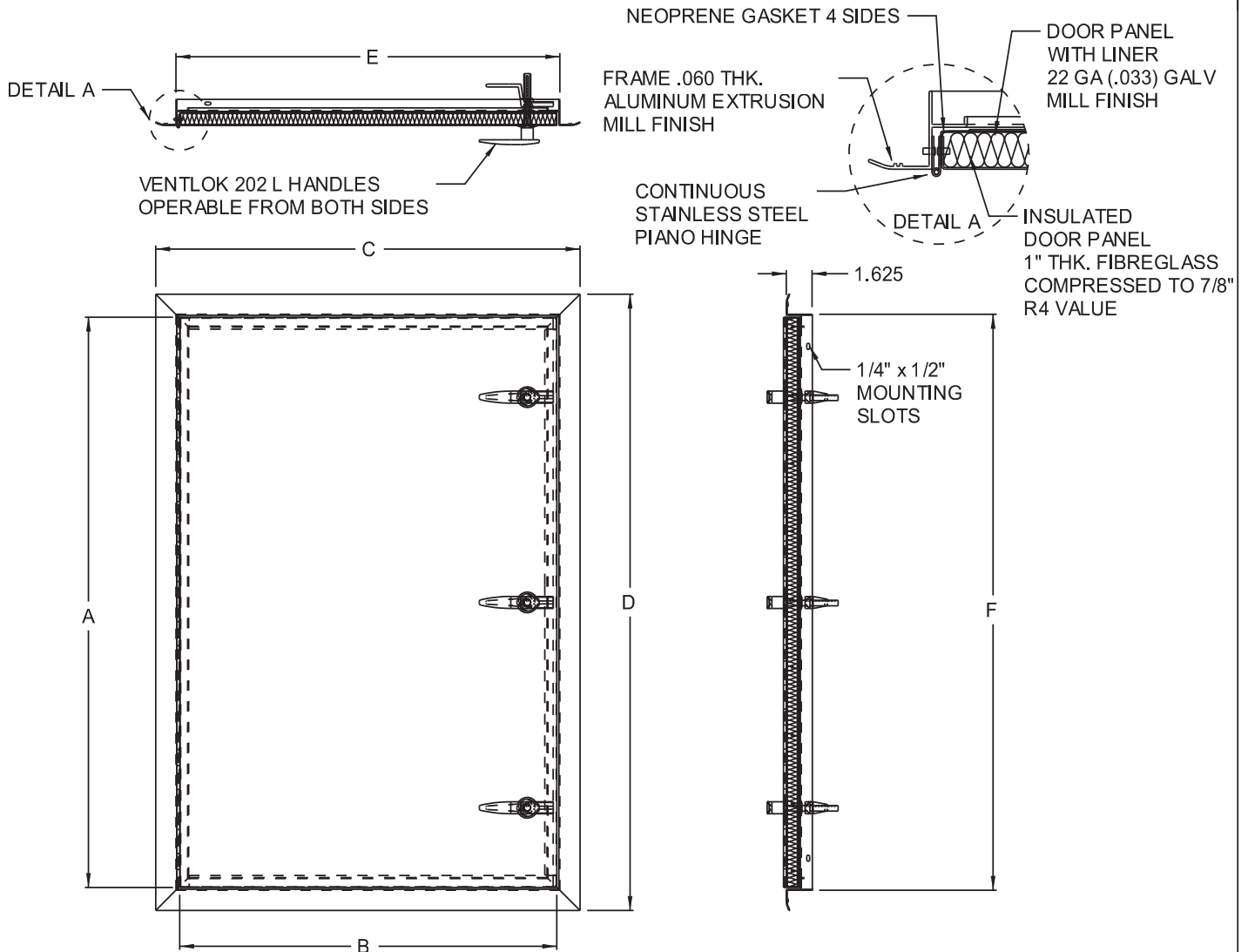


www.acudor.com
 U.S.A.: info@acudor.com / 800.722.0501
 CANADA: info@acudor.ca / 844.228.3671
 INTERNATIONAL: info@acudorintl.com
 (905) 428.2240

WD-8000

WALK THROUGH ACCESS DOOR

QTY.	NOMINAL SIZE	A	B	C	D	E	F	HANDLES
	24 x 36 (610 x 914)	35.625 (905)	23.500 (597)	26.484 (673)	38.484 (977)	24 (610)	36 (914)	2
	24 x 48 (610 x 1219)	47.625 (1210)	23.500 (597)	26.484 (673)	50.484 (1282)	24 (610)	48 (1219)	2
	24 x 60 (610 x 1524)	59.625 (1514)	23.500 (597)	26.484 (673)	62.484 (1587)	24 (610)	60 (1524)	3
	24 x 72 (610 x 1829)	71.625 (1819)	23.500 (597)	26.484 (673)	74.484 (1892)	24 (610)	72 (1829)	3
	30 x 36 (762 x 914)	35.625 (905)	29.500 (749)	32.484 (825)	38.484 (977)	30 (762)	36 (914)	2
	30 x 48 (762 x 1219)	47.625 (1210)	29.500 (749)	32.484 (825)	50.484 (1282)	30 (762)	48 (1219)	2
	30 x 60 (762 x 1524)	59.625 (1514)	29.500 (749)	32.484 (825)	62.484 (1587)	30 (762)	60 (1524)	3
	30 x 72 (762 x 1829)	71.625 (1819)	29.500 (749)	32.484 (825)	74.484 (1892)	30 (762)	72 (1829)	3



STANDARD FEATURES:
 VENTLOK 202 L HANDLES OPERABLE FROM BOTH SIDES
 GALVANIZED STEEL DOOR, ALUMINUM FRAME, MILL FINISH.

LOCK OPTIONS:

- RIM CYLINDER LOCK AND KEY
- 'L' HANDLE 3 POINT LATCHING

MATERIAL

- STAINLESS STEEL

FINISH

- #4 SATIN POLISH

JOB NAME:

APPROVED BY:

CUSTOMER:

DATE:

This document contains proprietary information which is the property of Acudor Products. It shall not be modified, copied, furnished, nor distributed (in whole or in part) without proper authorization. Copyright © 2020 Acudor Products.

This product is the proprietary property of Acudor Products. It is sold and distributed by Hallmann Sales with proper authorization.