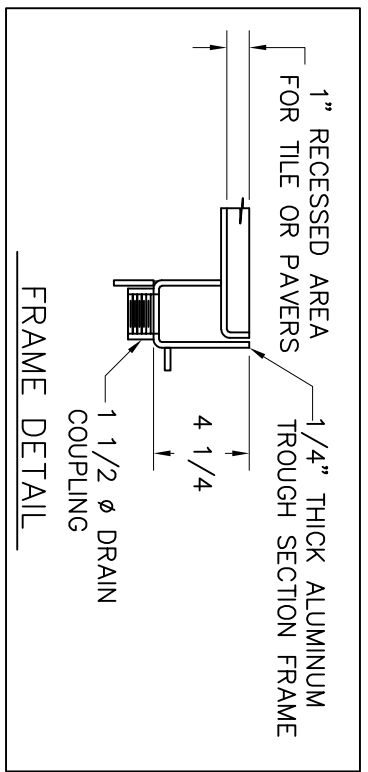
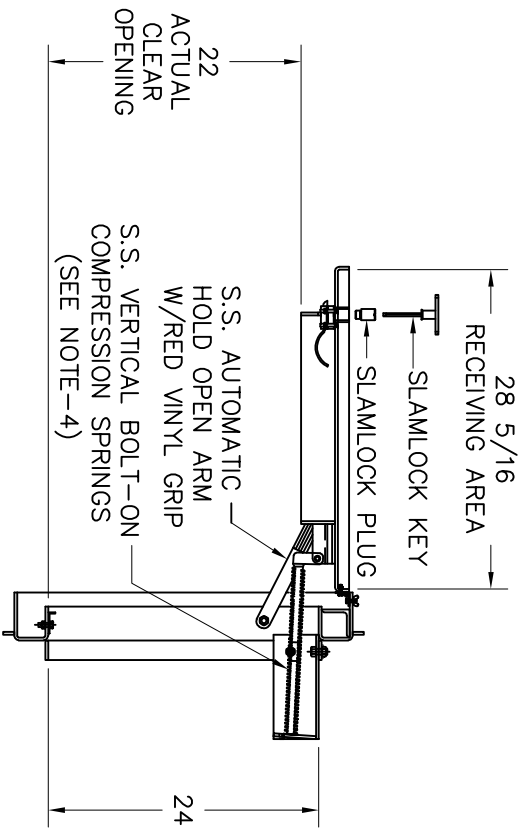


- NOTE:**
- 1- MATERIAL: ALUMINUM
 - 2- LOADING: 300 LBS. PER SQ. FT.
 - 3- 316 STAINLESS STEEL BOLTS & NUTS
 - 4- SPRING KIT SUPPLIED SEPARATELY & TO BE ASSEMBLED IN FIELD (BY OTHERS)
 - 5- AREA OF FRAME IN CONTACT WITH CONCRETE TO BE PAINTED WITH BITUMINOUS COATING.
 - 6- APPROX. HATCH WEIGHT: 75 LBS.

SPRING SUPPORT REMOVABLE BOLTED TO FRAME W/. 1/2" ϕ S.S. BOLTS AND ALUM. NUT TACK WELDED 1/4" PLATE (SKIRT)



| | | | | |
|------|---------|------|-------|-------------------|
| 1 | 7/27/16 | C.S. | C.S. | ADDED BOM TO BODN |
| REV. | DATE | BY | APP'D | DESCRIPTION |

THIS DOCUMENT IS THE PROPERTY OF ACUDOR PRODUCTS, INC AND CONTAINS PROPRIETARY INFORMATION. IT SHALL NOT BE MODIFIED, COPIED, FURNISHED NOR DISTRIBUTED (IN WHOLE OR IN PART) WITHOUT PROPER AUTHORIZATION OF ACUDOR PRODUCTS, INC.

| |
|---|
| INTERPRET DIMENSIONS AND TOLERANCES PER ASME Y14.5M |
| BREAK ALL SHARP CORNERS & EDGES TO 0.01 |
| TOLERANCES UNLESS OTHERWISE SPECIFIED: |
| INCHES = $\pm 1/16$ |
| 1/16 = $\pm 1/32$ |
| 1/32 = $\pm 1/64$ |

COPYRIGHT © 2016 ALL RIGHTS RESERVED

| | | | | | | | | | | | |
|---|------|-----------|------------|--------|--------|-------|----------|-------------|---|------|---|
| ACUDOR PRODUCTS | | | | | | | | | | | |
| FT-8050 24 X 24 ALUMINUM | | | | | | | | | | | |
| W/SPRINGS, SLAMLOCK, BIT. PAINT & 1" REC. FOR TILE OR PAVERS | | | | | | | | | | | |
| APP'D BY: | C.S. | SCALE: | 1=12 | SHEET: | 1 OF 2 | DATE: | 07/27/16 | SHEET SIZE: | B | REV: | 1 |
| DRAWN BY: | C.S. | DWG. NO.: | 1000027698 | | | | | | | | |