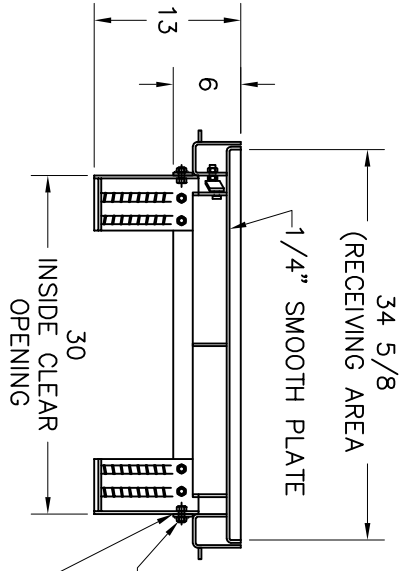


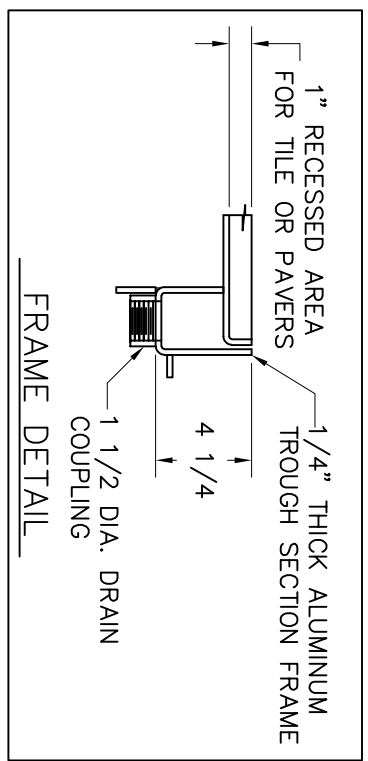
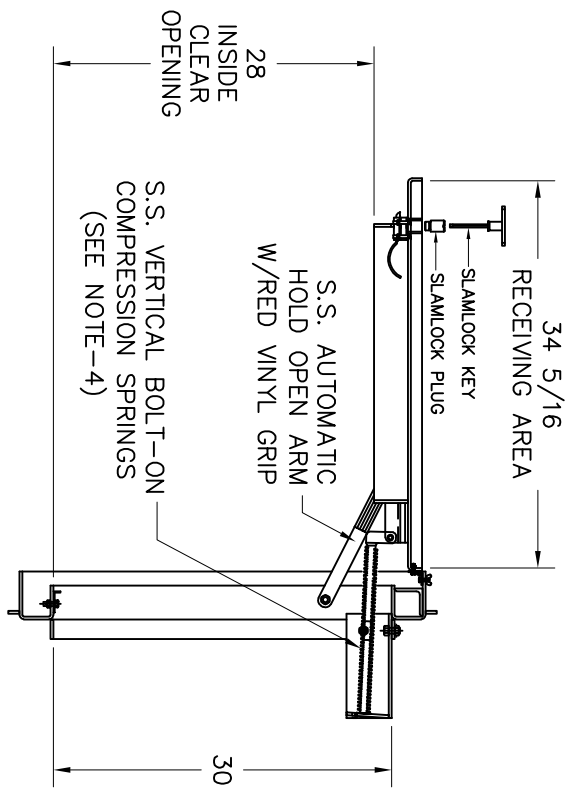
**NOTES:**

- 1- MATERIAL: ALUMINUM
- 2- LOADING: 300 LBS. PER SQ. FT.
- 3- 316 STAINLESS STEEL BOLTS & NUTS
- 4- SPRING KIT SUPPLIED SEPARATELY & TO BE ASSEMBLED IN FIELD (BY OTHERS)
- 5- AREA OF FRAME IN CONTACT WITH CONCRETE TO BE PAINTED WITH BITUMINOUS COATING.
- 6- APPROX. HATCH WEIGHT: 102 LBS.



SPRING SUPPORT REMOVABLE BOLTED TO FRAME W/. 1/2" DIA S.S. BOLTS AND ALUM. NUT TACK WELDED

1/4" PLATE (SKIRT)



**ACUDOR PRODUCTS**

FT-8050 30 X 30 ALUMINUM

W/SPRINGS, SLAMLOCK, BIT. PAINT & 1" RECESSED FOR STONE VENER

DRAWN BY: A.O.	SCALE: 1:12	SHEET: 1 OF 2	DATE: 06/23/16
APPROV BY: A.O.	DWG. NO: 1000019112	SHEET SIZE: B	REV: 0

COPYRIGHT © 2016  
ALL RIGHTS RESERVED

INTERPRET DIMENSIONS AND TOLERANCES PER ASME Y14.5M  
BREAK ALL SHARP CORNERS & EDGES TO 0.01

TOLERANCES UNLESS OTHERWISE SPECIFIED:  
INCHES = ± 1/16  
1/16 = ± 1/32  
1/32 = ± 1/64

THIS DOCUMENT IS THE PROPERTY OF ACUDOR PRODUCTS, INC AND CONTAINS PROPRIETARY INFORMATION. IT SHALL NOT BE MODIFIED, COPIED, FURNISHED NOR DISTRIBUTED (IN WHOLE OR IN PART) WITHOUT PROPER AUTHORIZATION OF ACUDOR PRODUCTS, INC.