



ACUDOR
Products Inc.

Hallmann Sales, LLC
866-966-9596

www.Hallmann-Sales.com

High-quality, architecturally pleasing,
innovative access doors for walls, ceilings,
ducts, floors and roofs



Floor Door Non Hinged, Panel Recessed 1" for Ceramic Tile/Concrete FT-8080-1

Application

- Designed for interior and exterior applications that require an access opening that will blend in with the surrounding floor material

Product Features

- Recessed 1" to accommodate ceramic tile/concrete.
- To keep the floor material from cracking or chipping within the door panel, the securing screws are located in the flange of the mounting frame

FT-8080-1 Floor Door Specifications:

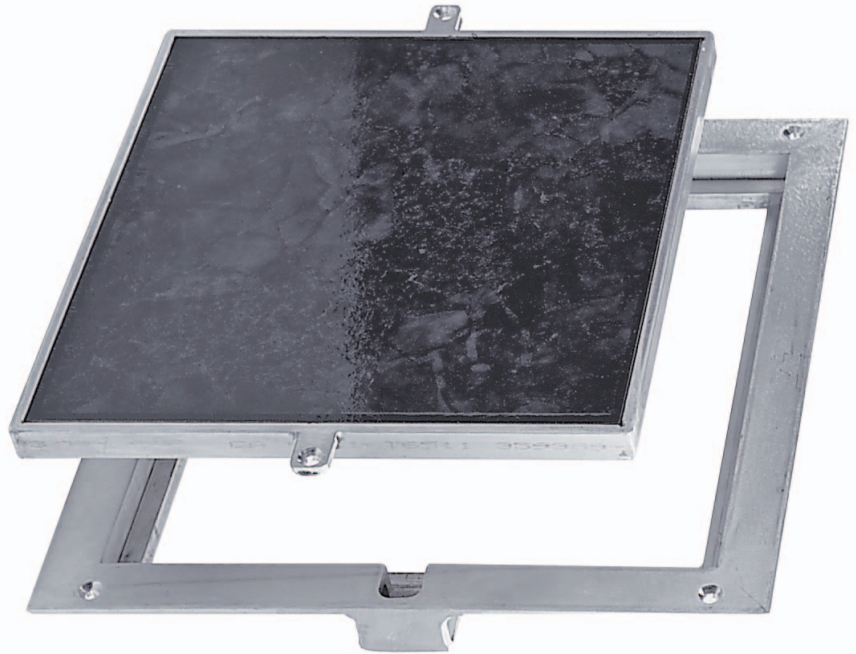
Material: Aluminum

Door: 1/4" smooth aluminum plate reinforced for live loads of 150 pounds/sq.ft. / recessed 1" for ceramic tile/concrete

Frame: 1-1/2" x 1-1/4" aluminum angle with mounting holes in top flange

Standard Latch: Door panel is secured to frame with 1/4" x 1" flat head screws

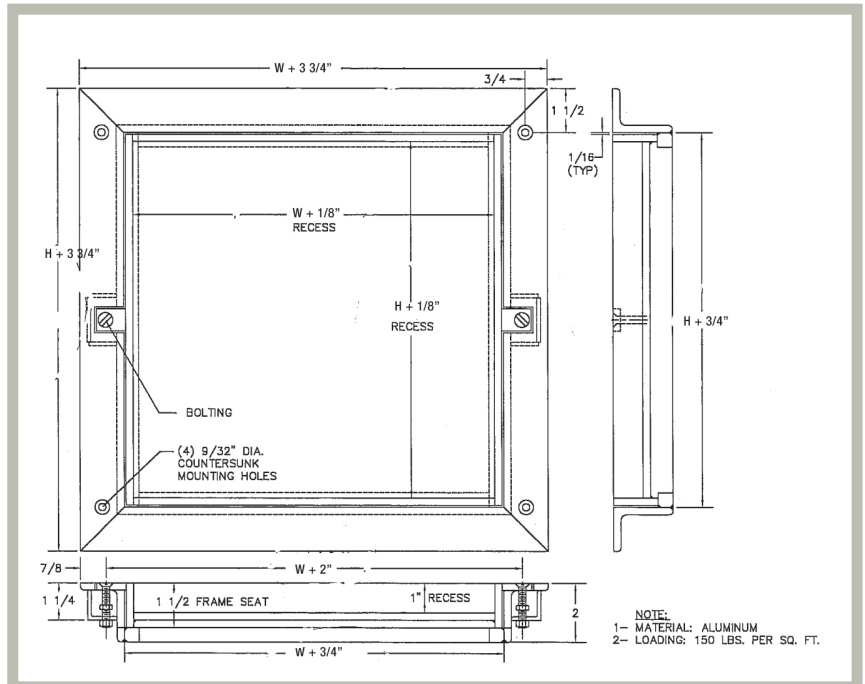
Finish: Mill finish



AVAILABLE SIZES (Special sizes available upon request)

NOMINAL DOOR SIZE W X H		WEIGHT PER DOOR	
inches	mm	lbs.	kg.
8 X 8	203 X 203	6	2.7
12 X 12	305 X 305	9	4.1
18 X 18	457 X 457	18	8.2
24 X 24	610 X 610	36	16.3

For detailed specifications see submittal sheet



For more information on Acudor Products Inc. visit www.Hallmann-Sales.com or call 866-966-9596

Product specifications may change without notice. Acudor is a registered Trade Mark ©2009